

# Installation Manual

SIMPATI® Service for SIMPATI® 4.70



---

# Table of contents

CHAPTER 1	<b>INTRODUCTION AND GENERAL INFORMATION. . . . .</b>	<b>5</b>
1.1	Finding your way around . . . . .	5
1.1.1	Symbols. . . . .	5
1.1.2	Symbols. . . . .	5
1.2	Warranty . . . . .	6
1.3	License rights . . . . .	6
1.4	Application and usage . . . . .	6
1.5	Safety instructions . . . . .	6
1.6	Service hotline . . . . .	6
CHAPTER 2	<b>INSTALLATION AND CONFIGURATION. . . . .</b>	<b>7</b>
2.1	Installing »Simpati Service« . . . . .	7
2.2	S!MPATI® 4.70 environment . . . . .	10
2.2.1	Information about desktop shortcuts . . . . .	10
2.2.2	Information about S!MPATI® 4.70 system processes . . . . .	11
2.2.3	Revising the »Simpati Service« startup type. . . . .	11
2.3	Changing the password. . . . .	13
2.3.1	Changing the password in »Simpati Service«. . . . .	13



# 1 INTRODUCTION AND GENERAL INFORMATION

Prior to installation:



- ▶ Before installing the S!MPATI®4.70 software, please read all of the instructions in this operating manual, the operating manual for the chamber and its controller.
- ▶ As the operator, issue appropriate operating guidelines on the basis of this operating manual. Take the relevant local and plant-internal conditions and the language of the operating personnel into account in doing so.

## 1.1 Finding your way around

### 1.1.1 Symbols

Explanation of the signs used in this operating manual:

- Items in a list are indicated by a dash.
- ▶ Instructions for the user and operator are indicated by a triangle.
- Cross-references are indicated by an arrow.

### 1.1.2 Symbols

The signal words and symbols used in this operating manual have the following meanings:



#### **DANGER**

Failure to comply with the directions results in death or severe injury.



#### **CAUTION**

Failure to comply with the directions can result in minor injury.

#### **NOTICE**

Failure to comply with the directions results in property damage.



This is used to indicate additional helpful information.

## Warranty

---

### 1.2 Warranty

Any warranty services are dependent on the immediate return of the completed warranty reply form and on full compliance with the requirements specified. The warranty is limited to the replacement of the software package, all other claims are herewith excluded.

### 1.3 License rights

The software is issued with a license for a single workstation.

Corresponding additional licenses are required if multiple chambers are in operation.

Additional licenses are available through our service center.

### 1.4 Application and usage

This software can be used to control a maximum of 99 chambers with various control methods.

### 1.5 Safety instructions



---

#### **DANGER**

#### **Disregarding the operating manual**

Failure to comply with the instructions in the operating manual for the chamber and its controller may result in death or serious injury.

► Follow the instructions.

---

### 1.6 Service hotline

Telephone number if service is required: +49 180 5666556

#### **Documentation in \*.pdf format**

The operating manual can be read using any standard PDF reader. The operating manual is included on the enclosed CD.

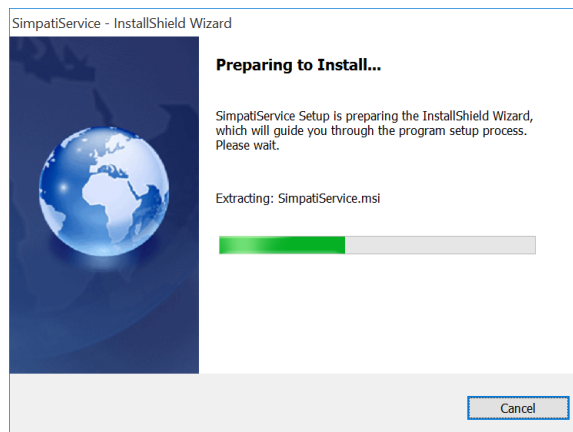
## 2 INSTALLATION AND CONFIGURATION

### 2.1 Installing »Simpati Service«

**Prerequisite:** S!MPATI® 4.70 has to be installed.

**Installing the service:**

- ▶ Run „SimpatiService\_Setup.exe”.
- ✓ Installation of the service starts.



*Fig. 2-1: Installation of »Simpati Service«*

- ▶ Enter the logon information for the »Simpati« user.
  - ▶ If the user has yet to be created, select »New User Information«.
  - ▶ Enter logon data for a new user.
  - ▶ Specify a password.
  - ▶ Select »OK« and confirm.

Installing »Simpati Service«

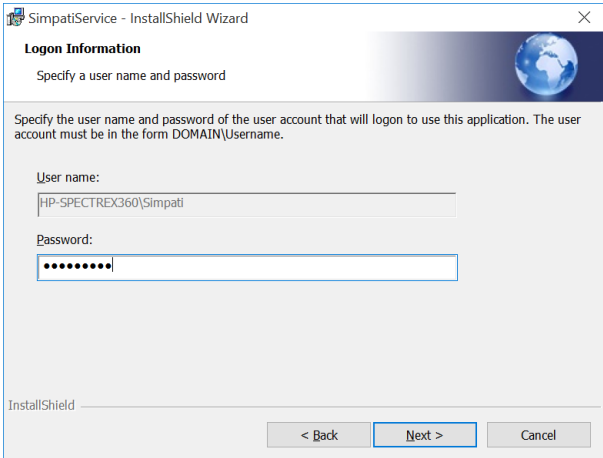


Fig. 2-2: Logon information

i

The »Simpati« user is created with the password specified.

If the SIMPATI® Web application was installed prior to this, the »Simpati« user was already created and just the password is prompted.

i

The password for the »Simpati« service user must be changed in a timely manner before the time that the validity expires because failing this the service does not start automatically after the expiration of the password. As an alternative to this, the »Simpati« user can be configured so that his password never expires.

- Once the logon information has been successfully entered, select »Next« and continue.
- Select »Install«.

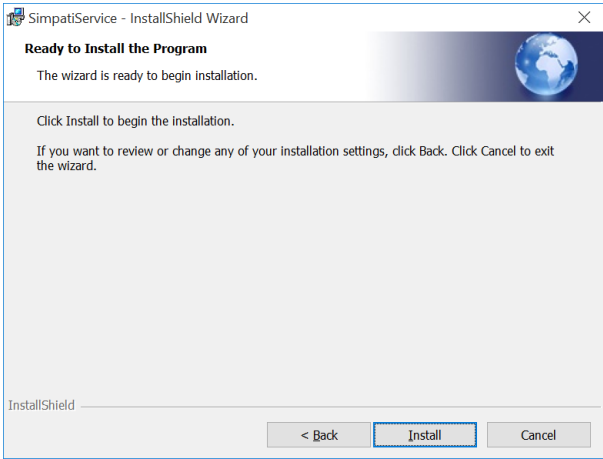
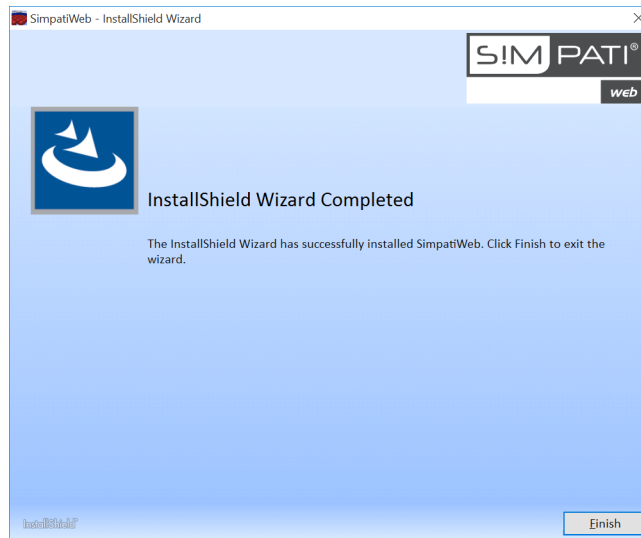


Fig. 2-3: Starting the installation of »Simpati Service«



- ✓ The installation is carried out. Once the installation has been successfully completed, a message appears.
- Select »Finish«



*Fig. 2-4: Installation successfully completed*

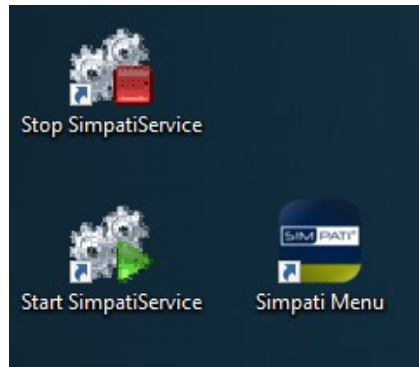
- ✓ The corresponding shortcuts are created on the desktop → 2.2 »S!MPATI® 4.70 environment« (page 10).

**SIMPATI® 4.70 environment**

---

**2.2 SIMPATI® 4.70 environment****2.2.1 Information about desktop shortcuts**

After the installation is completed in its entirety, the following shortcuts are displayed on the desktop:

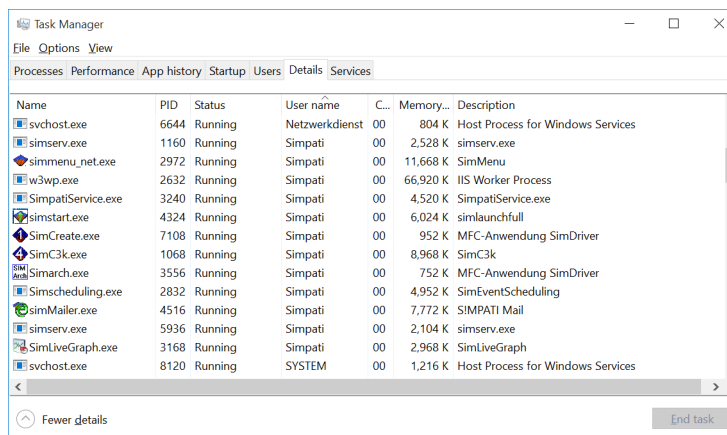


*Fig. 2-5: Desktop shortcuts*

- »Start SimpatiService«:  
The SIMPATI® 4.70 software and all SIMPATI® 4.70 background processes start up. Every program started as a service runs hidden in the background.
- »Stop SimpatiService«:  
Stops all SIMPATI® 4.70 background processes.
- »Simpati Menu«:  
The user interface main menu is opened. The software communicates with the background processes.  
The password specified during the installation is prompted on initial startup.

## 2.2.2 Information about SIMPATI® 4.70 system processes

SIMPATI® 4.70 system processes that are running are listed in Task Manager. Depending on the particular access rights, every hidden background process is displayed here as well.



Name	PID	Status	User name	C...	Memory...	Description
svchost.exe	6644	Running	Netzwerkdienst	00	804 K	Host Process for Windows Services
simsserv.exe	1160	Running	Simpati	00	2,528 K	simsserv.exe
simmenu_net.exe	2972	Running	Simpati	00	11,668 K	SimMenu
w3wp.exe	2632	Running	Simpati	00	66,920 K	IIS Worker Process
SimpatService.exe	3240	Running	Simpati	00	4,520 K	SimpatService.exe
simstart.exe	4324	Running	Simpati	00	6,024 K	simlaunchfull
SimCreate.exe	7108	Running	Simpati	00	952 K	MFC-Anwendung SimDriver
SimC3k.exe	1068	Running	Simpati	00	8,968 K	SimC3k
Simarch.exe	3556	Running	Simpati	00	752 K	MFC-Anwendung SimDriver
Simscheduling.exe	2832	Running	Simpati	00	4,952 K	SimEventScheduling
SimMailer.exe	4516	Running	Simpati	00	7,772 K	SIMPATI Mail
simsserv.exe	5936	Running	Simpati	00	2,104 K	simsserv.exe
SimLiveGraph.exe	3168	Running	Simpati	00	2,968 K	SimLiveGraph
svchost.exe	8120	Running	SYSTEM	00	1,216 K	Host Process for Windows Services

Fig. 2-6: List of the system processes in Task Manager



From Windows 8/Server 2008, the list of the system processes are displayed via the »Details« tab.



If the SIMPATI® Web application or »Simpati Service« was installed, sorting the process list by user is recommended. The processes are executed within the context of the »Simpati« user.

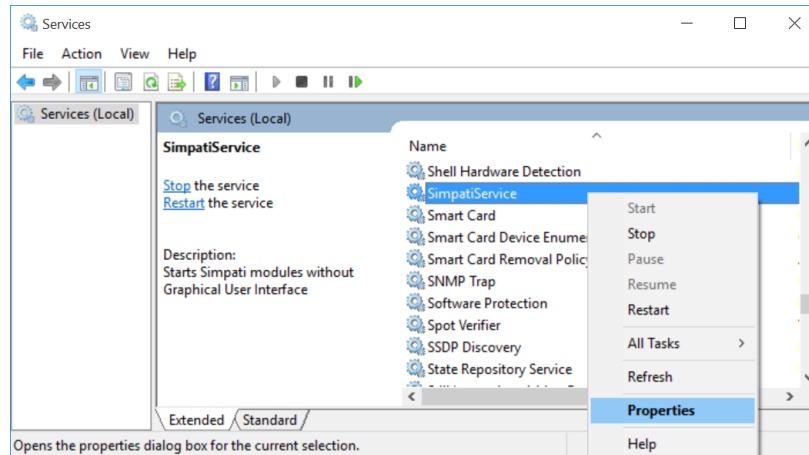
## 2.2.3 Revising the »Simpati Service« startup type

If »Simpati Service« was installed, then SIMPATI® 4.70, including all of the background processes, starts up with Windows automatically. Then following a restart of the operating system, SIMPATI® 4.70 establishes communication with the equipment automatically. The SIMPATI® 4.70 background processes resume their tasks again (e.g. archiving).

The »Simpati Service« startup type can be revised.

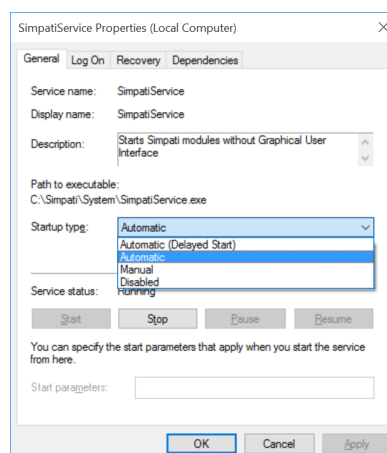
**SIMPATI® 4.70 environment****Revising the »Simpati Service« startup type:**

- In Windows select »Control panel« → »All control panel elements« → »Administration« → »Services«.
- Right-click on »Simpati Service« and call »Properties«.



*Fig. 2-7: »Simpati Service« on the control panel*

- Under the »General« tab → »Startup type« adjust the start behaviour accordingly.
  - »Automatic (Delayed Start)«:  
SIMPATI® 4.70 starts, including all of the background processes, once every service configured with the »Automatic« startup type has been started.
  - »Automatic«:  
SIMPATI® 4.70, including all of the background processes, starts up with Windows automatically.
  - »Manual«:  
SIMPATI® 4.70 and the background processes are not started automatically. Startup can be effected manually later on via the »Start SIMPATI SERVICE« shortcut on the desktop → 2.2 »SIMPATI® 4.70 environment« (page 10).
  - »Disabled«:  
Prevents SIMPATI® 4.70 and the background processes from starting up automatically. Manual startup is also prevented by this setting.



*Fig. 2-8: Revising the »Simpati Service« properties*

- Confirm the selection with »OK«.

## 2.3 Changing the password

If the password is changed by the (local) »Simpati« user after the installation, then the new password has to be updated in »Simpati Service«. If Simpati Web is installed, the new password has also to be updated in the Internet Information Service (IIS) accordingly.

### 2.3.1 Changing the password in »Simpati Service«

These steps need to be performed only if »Simpati Service« has been installed.

#### Changing the password:

- In Windows select »Control panel« → »All control panel elements« → »Administration« → »Services«.
- Right-click on »Simpati Service« and open properties«.

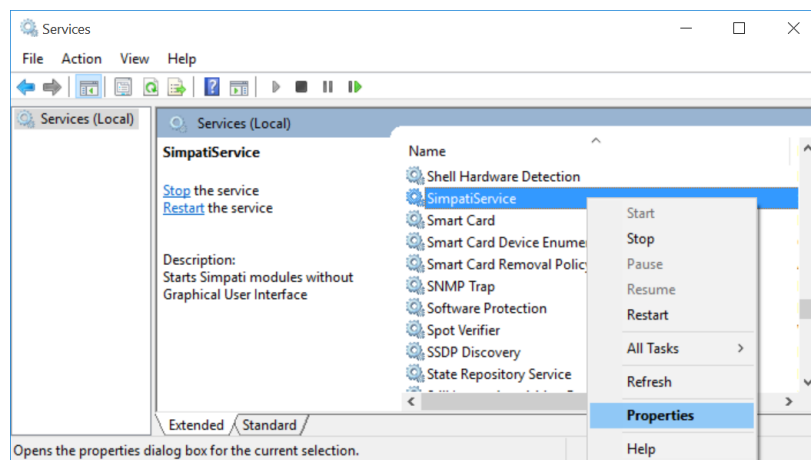


Fig. 2-9: »Simpati Service« on the control panel

- Select the »Logon« tab.
- Enter the new password under »Password«.
- Repeat the entry under »Confirm password«.

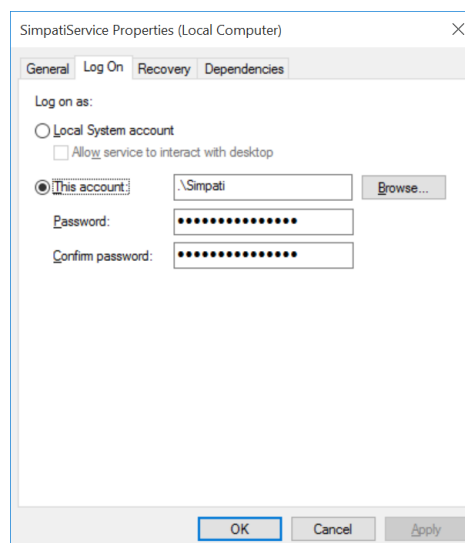


Fig. 2-10: Changing the password in »Simpati Service«

- Confirm the change with »OK«.

# Passionately innovative.

**We work in partnership to support companies in research, development, production and quality assurance.**  
**With 22 companies in 15 countries at 40 locations.**

**weisstechnik**

**Test it. Heat it. Cool it.**



## **Environmental Simulation**

The first choice for engineers and researchers for innovative, safe environmental simulation facilities. In fast motion, our test systems can simulate all the influences in the world as well as for instance in space. In temperature, climate, corrosion, dust or combined stress tests. With a very high degree of reproducibility and precision.



## **Climate Technology, Air Dehumidification, Clean Rooms**

As the leading provider of clean rooms, climate technology and air dehumidification, we consistently ensure optimal climatic conditions for people and machines. For industrial production processes, in hospitals, mobile operation tents or in the field of information and telecommunications technology. From project planning to implementation.



## **Heat Technology**

Experienced engineers and designers develop, plan and produce high-quality, reliable heat technology systems for a broad range of applications from heating and drying cabinets to microwave systems and industrial furnaces.



## **Clean Air and Containment Systems**

With decades of experience and know-how, we guarantee the most sophisticated clean air and containment solutions. Our comprehensive and innovative range of products includes barrier systems, laminar flow systems, safety workbenches, isolators and airlocks.

### **Weiss Umwelttechnik GmbH**

Greizer Straße 41-49  
35447 Reiskirchen/Germany  
T +49 6408 84-0  
[info@weiss-technik.com](mailto:info@weiss-technik.com)

### **Vötsch Industrietechnik GmbH**

Beethovenstraße 34  
72336 Balingen/Germany  
T +49 7433 303-0  
[info.voetsch@weiss-technik.com](mailto:info.voetsch@weiss-technik.com)

[www.weiss-technik.com](http://www.weiss-technik.com)