



OptoTech

Torilab Store

OptoTech Manual Polishing Machine



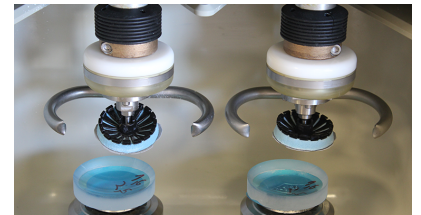
The OptoTech Torilab Store is a 2 spindle machine for polishing toric, spheric and freeform design lenses with only a handful of OptoTech new developed flex tools. The tools have an excellent tool life time so the consumable cost for operating a Torilab Store will be extraordinary low.



OptoTech

Données techniques

	Torilab Store
Lens Diameter	45 mm - 80 mm
Working Range	Plano up to 10 dpt. (cylinder -4 dpt.)
Lens Material	All organic Materials
Productivity	24 lenses/h
Tools	3 to 4 tools for pre-polishing 3 to 4 tools for fine polishing
Dimensions	Width: 660 mm, Height: 1620 mm, Depth: 810 mm
Weight (approx.)	180 kg



Highlights

- 2-Spindle machine for polishing toric, spheric and freeform lenses with the new Flex Tools developed by OptoTech
- The tools have an excellent tool lifetime so the consumable costs for operating a Torilab store will be extraordinary low (up to 100 surfaces/tool)
- Easy handling
- Fully PLC-controlled with independent pressure controll for the cylinder
- Macro functionality
- Host interface connection
- Compatible to standard block systems

System Advantages

- Most economic ophthalmic polishing machine in the market for FREEform lenses and the reliable and cost-effective entrance to freeform lens production for all kind of designs
- Minimal machining times due to the ideal kinematics

Options

Torilab Server Software, Polishing tank, Chiller

OptoTech Optikmaschinen GmbH
Sandusweg 2-4 | 35435 Wettenberg / Germany | T +49 641/49939-0 | info.de@optotech.net | optotech.net

OptoTech AG
Luterbachstraße 10 | 4528 Zuchwil / Schweiz | T +41 032 6133800 | info.ch@optotech.net | optotech.net